

摆线针轮减速机 Cycloid reducer

XB

一、前言 FOREWORD

行星摆线针轮减速机，是一种应用行星传动原理，采用摆线针齿啮合，设计先进，结构新颖的减速机构。该减速机可以广泛应用于各种传动机械中的减速机构，如：起重、运输、矿山、冶金、石化、纺织、印染、轻工、制药、粮食、饲料、食品机械等等。

Planet cycloidal pin gear reducer is a speed reducing construction with advance design, novel structure adopting the principle of planet driving and the falling-in of cycloidal pin gear. This reducer can be widely applied to the speed reducing structure of various driving machineries, such as; lift, transportation, mine, metallurgy, petrolchemical, textile, prention, light industry, pharmacy, food, forage, food, machinery, tec.

二、传动原理与结构 DRIVING PRINCIPLE & CONSTRUCTION

行星摆线针轮减速机的传动原理如图1所示：

输入轴1和转臂3一起绕中心Ob顺时针方向回转时，摆线轮2即随转臂一道绕中心Ob公转。由于固定在针齿壳5上的针齿的反作用使摆线轮绕其本身中心Oc逆时针方向自转，并通过销套销轴将其自转等速传递给输出轴4，故输出轴就得到了与输入轴相反转向的运动（输入轴转动一周，输出轴摆线轮转动-1/Ec周），其减速比为：

The Driving Principle of Planet cycloidal pin gear reducer is showed in the diagram 1.

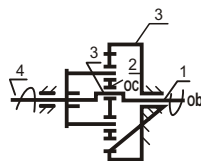
When input shaft 1 and rotating arm 3 are rotating around the OB Axis in chodckwise the cyclo idal gear 2 will rotate around the Sxis OB together the rotating a rm. The cycloidal gear will self-rotating around OC in countclockwise due to the counteraction of pin gear fixing in the pin gear shell 5, meanwhile, the self-rotation speed will be passed to output shaft 4 through pin shaft, as result, the output obtain the contrary movement against input shaft, (When input shaft rotate one cycle, the output cycloidal gear will rotate -1/EC cycle.), its velocity-reducing ratio is:

$i = (E_c - E_b) / E_c = -1 / E_c$ 其中: $E_c - E_b = -1$ $i = (E_c - E_b) / E_c = -1 / E_c$ among it: $E_c - E_b = -1$

E_c -- 摆线轮齿数 E_b -- 针齿齿数 E_c - Tooth No. of cycloidal gear, E_b - pin gear No.

由上式可知当输入轴转 E_c 转时输出轴则反向转1转

According to above formula, when input shaft rotate E_c cycles, the output shaft will rotate one cycle in counterdirection.



- | | |
|--------|-------------------|
| 1. 输入轴 | 1. Input shaft |
| 2. 摆线轮 | 2. Cycloidal gear |
| 3. 转臂 | 3. Rotating arm |
| 4. 输出轴 | 4. Output shaft |
| 5. 针齿壳 | 5. Pin gear shell |

图1 传动原理 Siagram 1 Driving Principle

行星摆线针轮减速机全部传动装置可分为三部分：输入部分；减速部分；输出部分。

The entire Driving Assembly can be divided into three parts; input part; speed-reducing part; output part.

三、特点 CHARACTERISTICS

1、减速比大：一级减速时速比为1/11-1/87；二级减速时速比为1/121-1/5133；三级减速时速比为1/2057-1/446571；根据需要可以采用更多级组合。

2、传动效率高：由于该机啮合部位采用了滚动啮合，故效率可达90%以上。

1. Big Velocity-Reducing Ratio: for single-stage speed-reducing, the ratio is 1/11 - 1/87; double-stage speed-reducing, the ratio is 1/121 - 1/5133; three-stage speed-reducing, the ratio is 1/2057 - 1/446571; we can adopt more-stages compound according the requirement.

2. High Driving efficiency: the driving efficiency can reach above 90% due to adopting rolling engagement in falling-in part.

3、体积小，重量轻：由于不仅采用了行星传动原理，输入轴和输出轴在同一轴线上，而且有与电动机直联呈一体的独特之处，因而本机具有结构紧凑，体积小，重量轻的特点。

4、故障少，寿命长：本机主要转动啮合件采用轴承钢制造，因此机械性能好，耐磨性好，再加采用滚动摩擦，故使之故障少，寿命长。

5、运转可靠平稳，本机传动过程中为多齿啮合，所以使之运转平稳可靠，噪音小。

6、拆装方便，容易维修：由于结构设计合理拆装简单便于维修。

7、本机还具有过载能力强，耐冲击、惯性力矩小、适用于起动频繁和正反转的特点。

3. Small volume, light weight: this machine has compacted structure; small volume and light weight because of adopting the principle of planet driving so that the input shaft and output shaft in the same axis, moreover, they will be integrated with the motor.

4. Few troubles, long life: this machine has good resistance to abrasion because the main driving engaging parts are made of bearing steel and applying rolling friction.

5. Stable Running: For most driving procedure, we adopt multi-teeth falling-in. so the running will be stable and little noise.

6. Convenient dismounting, easy maintenance: Due to reasonable structure and design.

7. This machine also has the characteristics such as strong overloading ability, anti-compact, small inertial moment, which are suitable for frequently start and double-side rotation.

四、技术规格

TECHNICAL DATA

1、机型号：Frame size

按机型分为：X系列和B系列

按传动比分为：一级、二级、三级

一级X系列有11种：1、2、3、4、5、6、7、8、9、10、11；

B系列有9种：0、1、2、3、4、5、6、7、8；

两级有10种：42、53、63、74、84、85、95、106、116、117；

三级有10种：642、742、842、852、853、952、953、1063、1164、1174；

按结构型式分为：卧式、立式、双轴型、直联型四种。

以上是我公司生产的标准减速机，此外，为了满足用户需要还可以承接非标设计制造。

Divided into X series and B series according to Frame size.

Divided into single stage, double stage and three-stage according to Driving Ratio.

Among single stage X series, they are: 1, 2, 3, 4, 5, 6, 7, 8, 9, 10, 11;

B series they are: 0, 1, 2, 3, 4, 5, 6, 7, 8;

The double stage they are: 42, 53, 63, 74, 84, 85, 95, 106, 116, 117;

The three stage, they are: 642, 742, 842, 852, 853, 952, 953, 1063, 1164, 1174;

Divided into horizontal-type, vertical-type, double-shaft and direct-connection type according to their construction.

The above are the standard speed-reducer of our company, furthermore, customer's special order also can be accepted;

2、减速比：Drive ratio

一级减速比有：标准速比：11、17、23、29、35、43、59、71、87；

非标速比：9、13、15、25、46；

Single Stage Drive Ratio:

Standard ratio are: 11, 17, 23, 29, 35, 43, 59, 71, 87;

Non-standard ratio are: 9, 13, 15, 25, 46;

二级减速比有：121、187、289、391、473、493、595、731、841、1003、1225、1505、1849、2065、2537、3481、5133

三级减速比有：2055-446571

Double Stage Driver Ratio: 121, 187, 289, 391, 473, 493, 595, 731, 841, 1003, 1225, 1505, 1849, 2065, 2537, 3481, 5133.

The above are the standard speed-reducer of our factory, furthermore, customer's special order also can be accepted.

Three stage transmission ratio: 2055-446571

说明：

(1) 型号表示方法示例中无字母“D或Y”者为双轴型，有字母“D或Y”者为电动机直联型。

(2) 在两级和三级减速机中各级减速比的组合，原则上以第一级（高速端）为减速比小的一端，而第二级或第三级（即低速端）为减速比大的一端。

(3) Z系列X系列电动机功率表示在前，机型号表示在后，其他系列则相反。

Description:

(1) In the construction of model No. iDi or iYi denote the motor direct-connection type, non iDi or iYi denote the double shaft type.

(2) In the compound of driving ratio between Double stage and Three Stage, principally, the small ratio should be the first stage (high speed side), and the big ratio should be the second stage or third stage (low speed side).

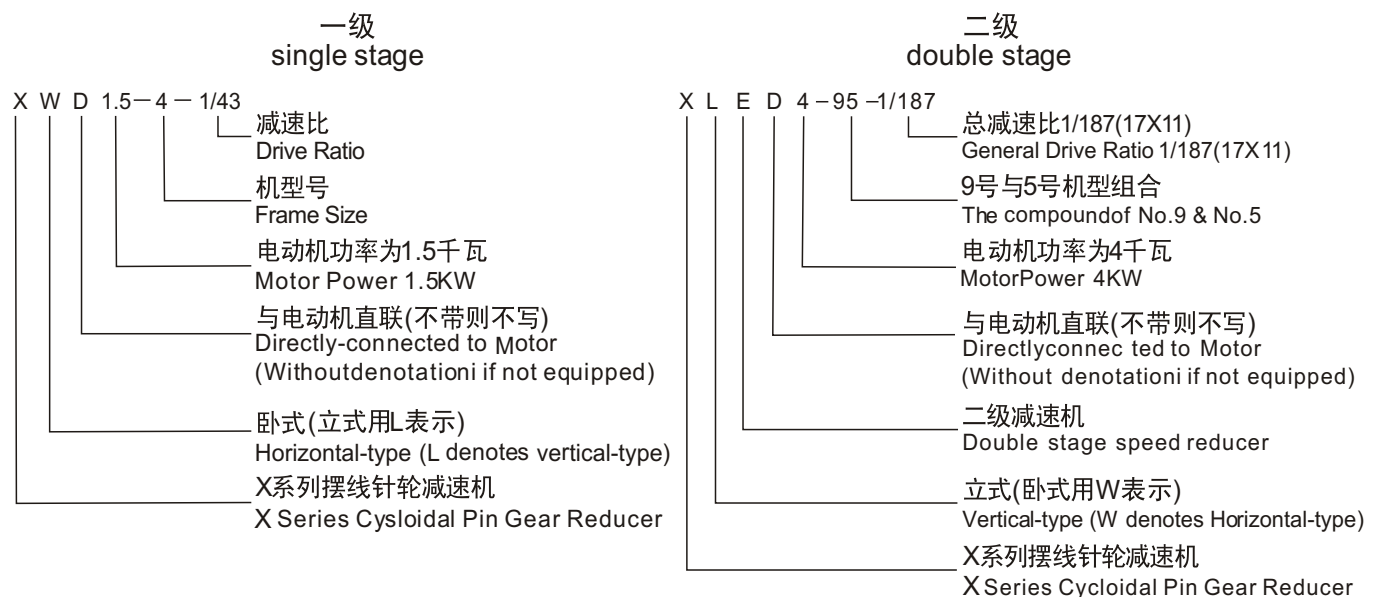
(3) For Z Series and X Series, the power denotes at front, the frame size at behind, for other series, contrary.

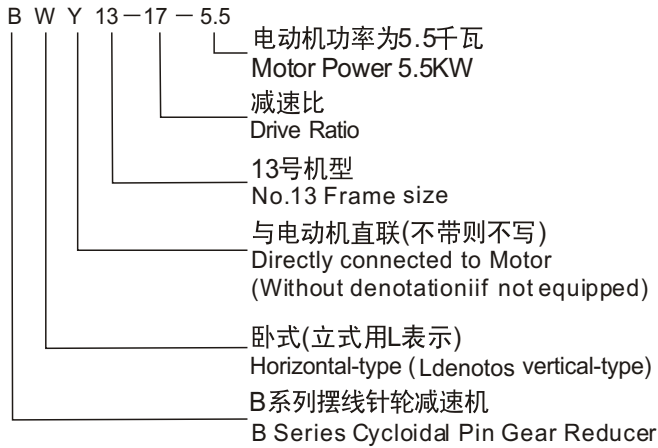
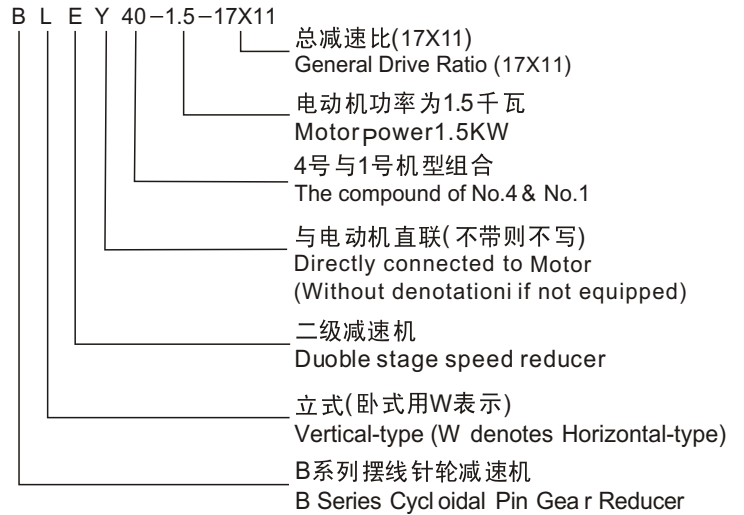
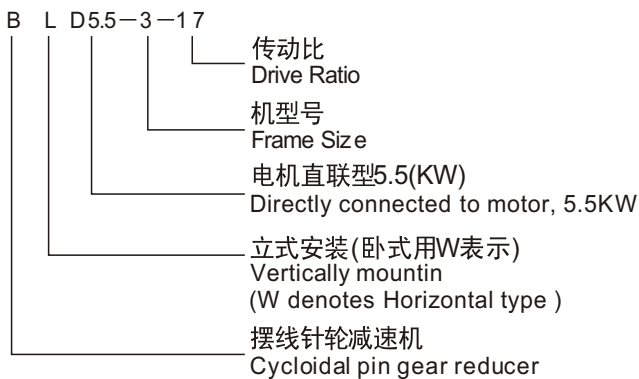
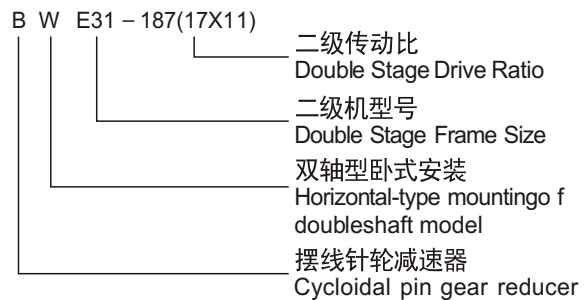
3、摆线针轮减速机动力源配置规定：Type of power Source to be equipped

普通电动机-D Normal Motor-D	调速电机-T Speed-regulating Motor-T	油马达-M Oil Motor -M
防爆电机-B Anti-explosion Motor-B	制动电机-N Braking Motor-N	本公司目前生产的摆线减速机均采用Y系列电动机配套。 All the cycloidal speed reducer of our company are equipped by Y Series Motors.
直流电机-Z DC Motor-Z	低噪声电机-S Low-noise Motor-s	

4、型号表示方法：Construction of model

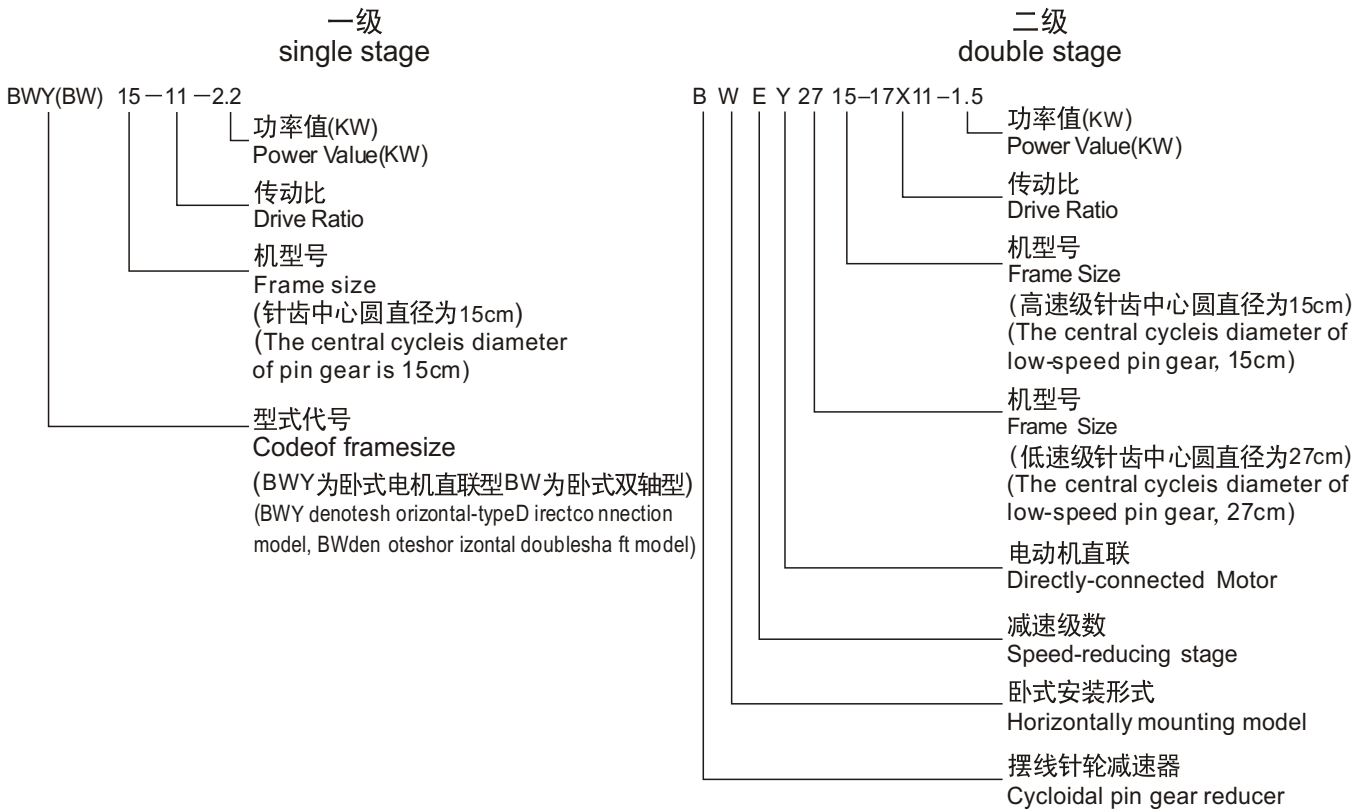
X系列(等同天津标准) X series (equivalent to Tianjin standard)



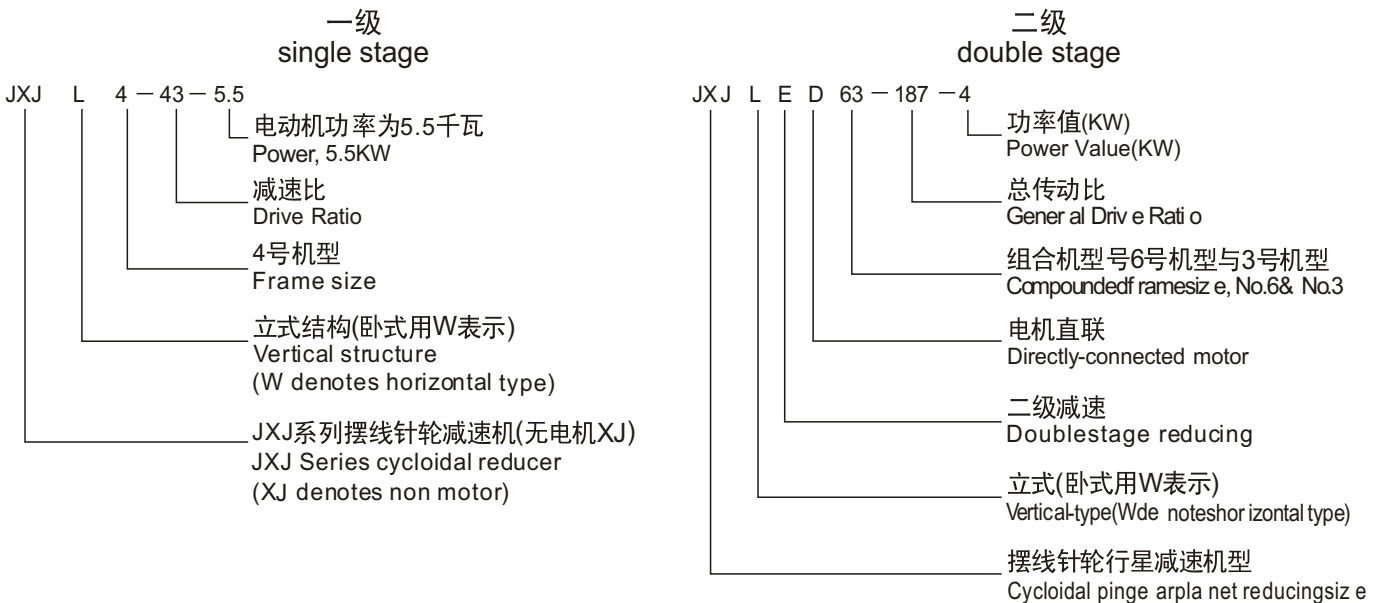
B系列(等同上海标准) B series (equivalent to Shanghai standard)
**一级
single stage**

**二级
double stage**

B系列(等同化工部标准) B series (equivalent to standard of Ministry of Chemical Industry)
**一级
single stage**

**二级
double stage**


B系列(等同机械部标准) B series (equivalent to Standard of Ministry of Machine-Building Industry)

XB



JXJ系列(等同江门标准) JXJ series (equivalent to Jiangmen standard)



5、单级减速机的各系列机型对照及技术参数表

Single stage Reducer Contrast different Frame Size and technical data:

表一 Table 1

各系列机型对照 Contrast for different frame size	X系列(等同天津标准) X series (equivalent to Tianjin standard)	1	2	3	4	5	6	7	8	9	10	11
	B系列(等同上海标准) B series (equivalent to Shanghai standard)	09	10	11	12	13	14		15	16	17	18
	B系列(等同化工部标准) B series (equivalent to Standard of Ministry of chemical Industry)		0	1	2	3	4		5	6	7	8
	B系列(等同机械部标准) B series (equivalent to Standard of Ministry of Machine-Building Industry)		12	15	18	22	27		33	39	45	55
	JXJ系列(等同江门标准) JXJ series (equivalent to Jiangmen standard)		0	1	2	3	4		5	6		
输入功率(KW) Input Power(KW) 最大许用转矩N.m Allowed Maximum torque N.m 输入轴转速(r/min) Output shaft rotating speed(r/min) 4极/6极 four poles/six poles 减速比 Drive Ratio		70	150	250	500	1000	2000	2300	3700	5700	12000	17000
11	136 91	0.55 0.25	0.75 0.55	2.2 1.5	4	7.5		15		22		55
17	88 59	0.55 0.25	0.75 0.55	1.5	3	5.5		11	18.5	18.5	45	45
23	60 40	0.37 0.25	0.75 0.55	1.1			7.5					45
29	52 35	0.25	0.55		1.5	4		11		18.5	30	37
35	43 29	0.25	0.55 0.37	0.75		4	7.5		11			37
43	38 23				1.1	3	5.5	7.5	11	15	18.5	30
59	25 17	0.25	0.25	0.55	1.1	2.2	4		7.5	11		30
(71)	21 14				0.75	1.5		3	4	7.5	11	22
87	17 12						2.2		5.5	5.5		18.5
								4	4	5.5	11	18.5
								3		4		15

说明: 1.表中15千瓦以下的均用4极电动机 (1500转/分), 18.5千以上的用6极电动机 (1000转/分)。

2.非标减速机的输入功率, 靠近标准减速比配置。

Instruction:

1. Below 15KW using four-pole motor (1500r/min), above 18.5KW using six-pole motor (1000r/min).

2. The non-standardized reducer is input power should be equipped close the standardized reducer.

XB

6、两级减速机的各系列机型对照及技术参数表

Double stage Reducer Contrast different Frame Size and technical data:

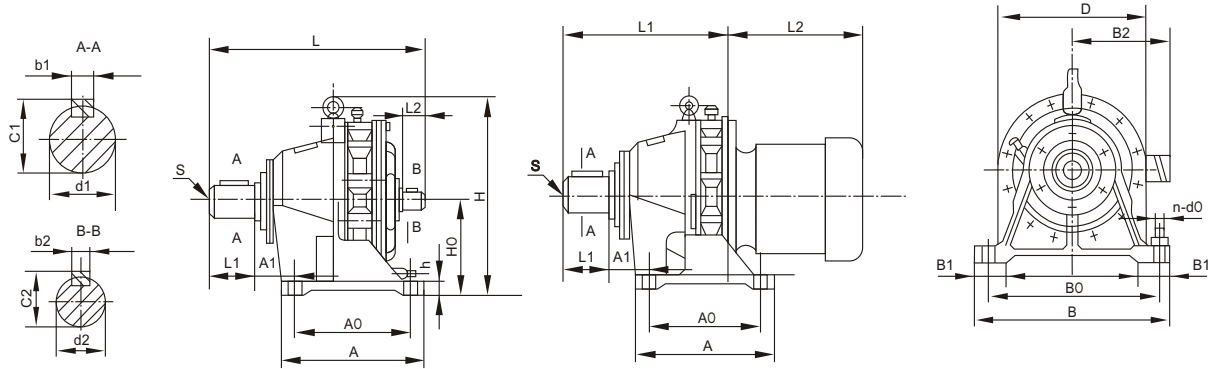
表二 Table 2

各系列机型对照 Contrast of different frame size		X系列(等同天津标准) X series (equivalent to Tianjin standard)	31	42	53	63	74	84	85	95	106	116	117	
		B系列(等同上海标准) B series (equivalent to Shanghai standard)	1109	120	131	141		152	153	163	174	184		
		B系列(等同化工部标准) B series (equivalent to Standard of Ministry of chemical Industry)		20	31	41		52	53	63	74	84		
		B系列(等同机械部标准) B series (equivalent to Standard of Ministry of Machine-Building Industry)		1812	2215	2715		3318	3322	3922	4527	5527		
		JXJ系列(等同江门标准) JXJ series (equivalent to Jiangmen standard)		20	31	41		52	53	63				
输入转速 Input speed		1500r/min												
输出转速 r/min Output Speed r/min	输入功率(KW) Input Power (KW)	最大许用转矩Nm Allowed Maximum torque N.m	250	500	1000	2000	2700	4500	4500	9000	12000	20000	20000	
	减速比 Drive Ratio													
12.4	121 (11X11)	0.37	1.1	1.5	1.5	3	3	5.5	5.4	11	11	11		
		0.25	0.75	1.1	1.1	2.2	2.2	3	4	7.5	7.5	7.5		
8.0	187 (17X11)	0.37	0.75	1.1	1.5	3	3	4	5.5	7.5	11	11		
		0.25	0.55	0.75	1.1	2.2	2.2	3	4	5.5	7.5	7.5		
5.2	289 (17X17)	0.18	0.55	0.75	1.1	2.2	2.2	3	4	7.5	7.5	7.5		
		0.12	0.37	0.55	0.75	1.5	1.5	2.2	3	5.5	5.5	5.5		
4.7	319 (29X11)		0.37	0.75	1.1	1.5	2.2	3	4	7.5	7.5	7.5		
				0.55	0.75	1.1	1.5	2.2	3	5.5	5.5	5.5		
3.2	473 (43X11)		0.25	0.55	0.75	1.1	1.5	2.2	3	5.5	5.5	5.5		
				0.37	0.55	0.75	1.1	1.5	2.2	4	4	4		
2.5	595 (35X17)		0.25	0.55	0.55	0.75	1.5	1.5	2.2	4	5.5	5.5		
				0.37	0.37	0.55	1.1	1.1	1.5	3	4	4		
2.0	731 (43X17)		0.25	0.37	0.55	0.75	1.1	1.5	2.2	4	4	4		
					0.37	0.55	0.75	1.1	1.5	3	3	3		
1.8	841 (29X29)		0.25	0.37	0.37	0.55	1.1	1.1	1.5	3	4	4		
						0.75	1.1	1.1	1.5	2.2	3	3		
1.5	1003(59X17)		0.25	0.37	0.37	0.55	0.75	1.1	1.5	2.2	3	3		
							1.1	1.1	1.5	1.5				
1.2	1225 (35X35)		0.25	0.37	0.37	0.55	0.75	1.1	1.1	2.2	3	3		
										1.5				
1.0	1505 (43X35)		0.25	0.37	0.37	0.55	0.75	1.1	1.1	1.5	3	3		
0.8	1849 (43X43)		0.25	0.37	0.37	0.55	0.75	1.1	1.1	1.5	3	3		
0.7	2065(59X35)		0.25	0.37	0.37	0.55	0.75	1.1	1.1	1.5	3	3		
0.6	2537 (59X43)		0.25	0.37	0.37	0.55	0.75	1.1	1.1	1.5	3	3		
0.4	3481 (59X59)			0.37	0.37	0.55	0.75	1.1	1.1	1.5	3	3		
0.3	5133 (87X59)			0.37	0.37	0.55	0.75	1.1	1.1	1.5	3	3		

说明：选用减速机以输出轴转矩为依据，当所用的电动机功率大于表中值时，电动机不能全容量使用。

Instruction: Choosing the reducer should base on the torque of output shaft. When all the value of using motor are bigger than thoes in the table and the motor can't be used fully volume.

五、摆线针轮减速机的外形安装尺寸 Cycloidal Reducers Contour overall and mounting dimensions

XB


XW(D)型卧式单级外形安装及联接尺寸 天津标准 Tianjin standard
XW(D) type (horizontal single stage) overall and mounting dimensions

Frame size 机型号	Centre height 中心高H0	安装尺寸 Mounting dimensions								轴伸连接尺寸 Shaft connecting dimensions								外形尺寸 Overall dimensions						重量kg Weight kg		
		A1	A0	B1	B0	h	s	地脚螺钉 Mounting screw		输出轴 Output shaft				输入轴 Input shaft				A	B	H	D	双轴型 Double shaft model			直联型 Direct connection model	
								n	d0	d1	b1	c1	l1	d2	b2	c2	l2					L	L1		L2	
1	100	25	90	40	150	12	M8	4	12	28	8	31	35	15	5	17	25	120	180	175	150	202	141	见电动机外形尺寸一览表 for electric motor	8	
2	100	53	90	45	180	15	M8	4	12	25	8	28	34	15	5	17	25	120	210	175	168	218	155		14	
3	140	95	100	55	250	20	M8	4	16	35	10	29	55	18	6	20.5	35	150	290	240	200	269	191		29	
4	150	95	145	65	290	22	M10	4	16	45	14	48.5	74	22	6	24.5	40	195	330	275	240	340	255		45	
5	160	115	150	75	370	25	M12	4	16	55	16	59	91	30	8	33	45	260	420	356	300	399	302		92	
6	200	36	275	75	330	30	M12	4	18	65	18	69	89	35	10	38	54	335	430	425	340	470	358		131	
7	220	36	320	85	420	30	M12	4	22	80	22	85	109	40	12	43	65	380	470	460	360	522	397		165	
8	250	35	380	120	480	35	M16	4	22	90	25	95	120	45	14	48.5	70	440	530	529	430	581	440		245	
9	290	45	480	120	560	40	M20	4	26	100	28	106	141	50	14	53.5	80	560	620	614	500	598	529		390	
10	325	80	500	120	630	45	M24	6	30	110	28	116	150	55	16	59	100	600	690	706	580	806	608		564	
11	420	122	330X2	160	800	50	2-M20	6	32	130	32	137	202	70	20	74.9	120	810	880	883	710	1022	811		1160	

BW(Y)型卧式单级外形安装及联接尺寸 上海标准 Shanghai standard
BW(Y) type (horizontal single stage) overall and mounting dimensions

Frame size 机型号	Centre height 中心高H0	安装尺寸 Mounting dimensions								轴伸连接尺寸 Shaft connecting dimensions								外形尺寸 Overall dimensions						重量kg Weight kg		
		A1	A0	B1	B0	h	s	地脚螺钉 Mounting screw		输出轴 Output shaft				输入轴 Input shaft				A	B	H	D	双轴型 Double shaft model			直联型 Direct connection model	
								n	d0	d1	b1	c1	l1	d2	b2	c2	l2					L	L1		L2	
09	90	17	76	30	120	12	M8	4	11	22	6	24.5	30	15	5	17	25	100	144	160	140	203	142	见电动机外形尺寸一览表 for electric motor	6.5	
10	100	58	90	35	150	15	M8	4	11	30	8	33	35	15	5	17	25	120	185	168	168	218	155		14	
11	120	69	110	55	240	15	M8	4	13	35	10	38	56	18	6	20.5	35	160	280	240	200	269	191		29	
12	140	73	150	60	280	20	M10	4	13	45	14	48.5	71	22	6	24.5	40	200	320	275	240	340	255		45	
13	160	78	200	75	340	25	M12	4	17	55	16	59	80	30	8	33	45	250	390	356	300	390	294		80	
14	200	53	320	80	340	25	M12	4	22	70	20	74.5	102	35	10	38	54	380	400	425	340	481	369		135	
15	240	39	380	80	420	32	M16	4	22	90	25	95	120	45	14	48.5	70	440	470	529	430	581	440		210	
16A	280	45	440	90	500	40	M20	4	28	100	28	106	140	50	14	53.5	80	560	620	614	500	598	529		400	
16	290	45	480	90	500	35	M20	4	28	100	28	106	140	50	14	53.5	80	560	620	614	500	598	529		400	
17	325	80	550	120	630	40	M20	4	30	120	32	127	165	55	16	59	100	600	690	706	580	795	639		660	
18	420	122	330X2	160	800	50	2-M20	6	32	140	36	148	210	70	20	74.5	120	810	880	883	710	1030	819		1180	

注：1、表中所列尺寸单位为毫米；
Note: 1. The size unit in the table are millimeter;
2、d1 d2轴轴伸配合公差为h6。
2. Matching tolerance of shafts, h6.

BW(Y)型卧式单级外形安装及联接尺寸 化工部标准 Standard of Ministry of Chemical Industry
BW(Y) type. (horizontal Single stage) overall and mounting dimensions
XB

机架尺寸 Frame size	中心高H Centre height	安装尺寸 Mounting dimensions								轴伸连接尺寸 Shaft connecting dimensions								外形尺寸 Overall dimensions						重量kg Weight kg		
		A1	A0	B1	B0	h	s	地脚螺钉 Ground mounting screw		输出轴 Output shaft				输入轴 Input shaft				A	B	H	D	双轴型 Double shaft model			直联型 Direct connetion model	
								n	d0	d1	b1	c1	l1	d2	b2	c2	l2					L	L1		L2	
0	100	58	90	45	150	16	M8	4	12	30	80	33	35	15	5	17	25	120	185	134	168	211	155	见电动机外形尺寸一览表 for electric motor	15	
1	140	95	100	55	250	20	M8	4	14	35	10	38	58	18	6	20.5	35	150	290	284	200	282	216		22	
2	150	95	145	60	290	22	M10	4	18	45	14	48.5	82	22	6	24.5	40	200	330	318	240	352	276		40	
3	160	113	150	75	370	25	M12	4	18	55	16	59	82	30	8	33	45	238	410	360	300	422	316		73	
4	200	35	275	80	380	30	M12	4	22	70	20	74.5	105	35	10	38	54	335	430	435	340	490	383		120	
5	250	35	380	85	480	35	M16	4	28	90	25	95	130	45	14	48.5	70	440	530	542	430	629	464		185	
6	290	45	480	90	560	40	M20	4	28	100	28	106	165	50	14	53.5	80	560	620	619	500	730	556		330	
7	325	80	500	105	630	45	M24	4	28	110	28	116	165	55	16	59	100	600	690	706	580	783	594		564	
8	420	122	330X2	140	800	50	2-M20	6	36	130	32	137	200	70	20	74.5	120	810	880	880	710	966	733		1160	

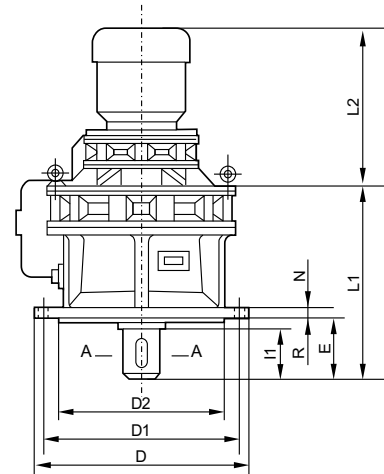
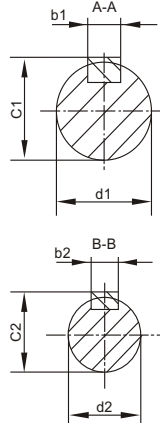
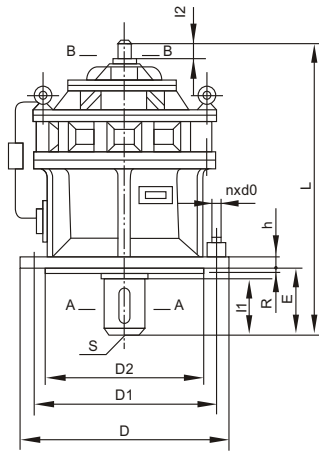
BW(Y)型卧式单级外形安装及联接尺寸 机械部标准 Standard of Ministry of Machine-Building Industry
BW(Y) type. (horizontal Single stage) overall and mounting dimensions

机架尺寸 Frame size	中心高H Centre height	安装尺寸 Mounting dimensions								轴伸连接尺寸 Shaft connecting dimensions								外形尺寸 Overall dimensions						重量kg Weight kg		
		A1	A0	B1	B0	h	s	地脚螺钉 Mounting screw		输出轴 Output shaft				输入轴 Input shaft				A	B	H	D	双轴型 Double shaft model			直联型 Direct connetion model	
								n	d0	d1	b1	c1	l1	d2	b2	c2	l2					L	L1		L2	
12	100	58	90	45	150	16	M8	4	11	30	8	33	35	15	5	17	25	120	185	190	168	215	161	见电动机外形尺寸一览表 for electric motor	18	
15	140	95	100	55	250	20	M8	4	13	35	10	38	58	18	6	20.5	25	150	290	284	200	282	216		32	
18	150	95	145	60	290	22	M10	4	17	45	14	48.5	82	22	6	24.5	40	195	330	318	240	352	276		40	
22	160	113	150	75	370	25	M12	4	17	55	16	59	82	30	8	33	45	238	410	360	300	422	316		73	
27	200	35	275	80	380	30	M12	4	22	70	20	74.5	105	35	10	38	54	335	430	435	340	490	383		120	
33	250	35	380	85	480	35	M16	4	26	90	25	95	130	45	14	48.5	70	440	530	542	430	629	464		185	
39	290	45	480	90	560	40	M20	4	26	100	28	106	165	50	14	53.5	80	560	620	619	500	730	556		330	
45	325	80	500	105	630	45	M24	4	30	110	28	116	165	55	16	59	100	600	690	706	580	783	594		620	
55	400	122	330X2	140	800	50	2-M20	6	36	130	32	137	200	70	20	74.5	120	810	880	880	710	966	733		1180	

JXJW型卧式双级外形安装及联接尺寸 江门标准 Jiangmenstandard
JXJW type. (horizontal Single stage) overall and mounting

机架尺寸 Frame size	中心高H Centre height	安装尺寸 Mounting dimensions								轴伸连接尺寸 Shaft connecting dimensions								外形尺寸 Overall dimensions						重量kg Weight kg		
		A1	A0	B1	B0	h	s	地脚螺钉 Mounting screw		输出轴 Output shaft				输入轴 Input shaft				A	B	H	D	双轴型 Double shaft model			直联型 Direct connetion model	
								n	d0	d1	b1	c1	l1	d2	b2	c2	l2					L	L1		L2	
0	100	45	90	45	180	15	M8	4	11	25	8	28	34	15	5	17	25	120	210	175	150	218	155	见电动机外形尺寸一览表 for electric motor	15	
1	140	55	100	55	250	20	M8	4	16	35	12	38	58	18	6	20.5	35	150	290	284	200	269	191		25	
2	140	60	180	60	285	20	M10	4	16	50	14	53.5	70	22	6	24.5	40	230	335	310	240	332	251		45	
3	160	60	220	75	350	25	M12	4	18	65	18	69	110	30	8	33	45	280	410	355	300	428	332		86	
4	190	72	270	80	400	25	M12	4	25	80	22	85	130	35	10	38	54	350	460	430	340	509	384		125	
5	250	85	380	80	480	35	M16	4	25	90	25	95	130	45	14	48.5	70	440	530	540	430	603	462		190	
6	290	90	480	90	560	40	M20	4	28	100	28	106	165	50	14	53.5	80	560	620	614	500	723	554	400		

注：1、表中所列尺寸单位为毫米； 2、d1 d2轴轴伸配合公差为h6。
 Note: 1. The size unit in the table are millimeter; 2. Matching tolerance of shafts, h6.



XL(D)型立式单级外形安装及联接尺寸 天津标准 Tianjing standard
XL(D) type (vertically single stage) overall and mounting dimensions

机型号 Frame size	安装尺寸 Mounting dimensions							轴伸连接尺寸 Shaft connecting dimensions								外形尺寸 Overall dimensions			重量 Weight kg		
	D1	D2	E	h	R	S	地脚螺钉 Mounting screw		输出轴 Output shaft				输入轴 Input shaft				D	双轴型 Double shaft model		直联型 Direct connetion model	
							n	d0	d1	b1	c1	l1	d2	b2	c2	l2		L		L1	L2
1	134	110	48	9	3	M8	4	12	28	8	31	35	15	5	17	25	160	202	141	见电动机外形尺寸一览表 See overall dimensions for electric motor	8
2	160	130	42	12	3	M8	6	12	25	8	28	34	15	5	17	25	180	218	155		13
3	200	170	50	15	4	M8	6	12	35	10	38	45	18	6	20.5	35	230	369	191		26
4	230	200	79	15	4	M10	6	12	45	14	48.5	64	22	6	24.5	45	260	340	255		38
5	310	270	93	20	4	M12	6	12	55	16	59	79	30	8	33	45	340	399	302		93
6	360	316	94	22	5	M12	8	16	65	18	69	80	35	10	38	65	400	470	358		138
7	390	345	114	22	5	M12	8	18	80	22	85	98	40	12	43	65	430	522	397		160
8	450	400	112	30	6	M16	12	18	90	25	95	110	45	14	48.5	70	490	581	440		240
9	520	455	170	35	8	M20	12	22	100	28	103	130	50	14	53.5	80	580	698	529		370
10	590	520	174	40	10	M24	12	22	110	28	116	140	55	16	59	100	650	806	608		622
11	800	680	210	45	10	2-M20	12	38	130	32	137	184	70	20	74.5	120	880	1042	811		1210

JXJL型立式单级外形安装及联接尺寸 江门标准 Jiangmen standard
JXJL type (vertically single stage) overall and mounting dimensions

机型号 Frame size	安装尺寸 Mounting dimensions							轴伸连接尺寸 Shaft connecting dimensions								外形尺寸 Overall dimensions			重量 Weight kg		
	D1	D2	E	h	R	S	地脚螺钉 Mounting screw		输出轴 Output shaft				输入轴 Input shaft				D	双轴型 Double shaft model		直联型 Direct connetion model	
							n	d0	d1	b1	c1	l1	d2	b2	c2	l2		L		L1	L2
0	134	110	40	10	3	M8	6	11	25	8	28	34	15	5	17	25	190	218	155	见电动机外形尺寸一览表 See overall dimensions for electric motor	15
1	200	170	65	16	4	M8	6	14	35	12	38	57	18	6	20.5	35	230	282	198		25
2	230	200	66	18	4	M10	6	14	50	14	53.5	68	22	6	24.5	40	26	352	251		45
3	310	270	89	25	4	M12	6	14	65	18	69	82	30	8	33	45	340	428	332		80
4	360	316	125	25	5	M12	8	20	80	22	85	115	35	10	38	54	400	520	394		115
5	450	400	140	30	6	M16	12	20	90	25	95	130	45	14	48.5	70	495	629	264		184
6	520	455	177	35	8	M20	12	20	100	28	106	165	50	14	53.5	80	580	736	554		380

注：1、表中所有尺寸单位为毫米；
 Note: 1. The size unit in the table are millimeter;

2、d1 d2轴轴伸配合公差为h6。
 2. Matching tolerance of shafts, h6.

BL(Y)型卧式单级外形安装及联接尺寸 机械部标准 Standard of Ministry of Machinery-Building Industry
 BL(Y) type. (horizontal Single stage) overall and mounting dimensions

XB

机架尺寸 Frame size	安装尺寸 Mounting dimensions							轴伸连接尺寸 Shaft connecting dimensions								外形尺寸 Overall dimensions			重量 Weight kg		
	D1	D2	E	h	R	S	地脚螺钉 Mounting screw		输出轴 Output shaft				输入轴 Input shaft				D	双轴型 Double shaft model		直联型 Direct connetion model	
							n	d0	d1	b1	c1	l1	d2	b2	c2	l2		L		L1	L2
12	160	140	39	12	3	M8	4	11	30	8	33	35	15	5	17	25	190	215	161	见电动机外形尺寸一览表 See overall dimensions for electric motor	15
15	200	170	65	16	4	M8	6	14	35	10	38	58	18	6	20.5	35	230	282	216		45
18	230	200	89	20	4	M10	6	14	45	14	45.8	81	22	6	24.5	40	260	352	276		64
22	310	270	89	22	4	M12	6	14	55	16	59	82	30	8	33	45	340	422	346		111
27	360	316	114	26	5	M12	8	18	70	20	74.5	105	35	10	38	54	400	490	383		171
33	450	400	140	30	6	M16	12	22	90	25	95	130	45	14	48.5	70	490	629	464		290
39	520	455	177	35	8	M20	12	22	100	28	106	165	50	14	53.5	80	580	736	556		400
45	590	520	180	40	10	M20	12	28	110	28	116	165	55	16	59	100	650	783	594		612
55	800	680	215	45	10	2-M20	12	34	130	32	137	200	70	20	74.5	120	880	966	733		1116

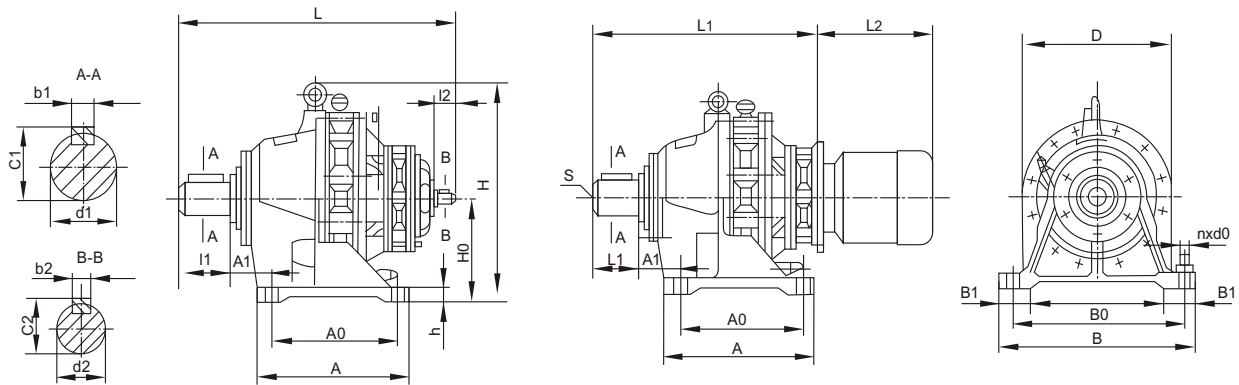
BY(Y)型卧式单级外形安装及联接尺寸 化工部标准 Standard of Ministry of Chemical Industry
 BY(Y) type (horizontal single stage) overall and mounting dimensions

机架尺寸 Frame size	安装尺寸 Mounting dimensions							轴伸连接尺寸 Shaft connecting dimensions								外形尺寸 Overall dimensions			重量 Weight kg		
	D1	D2	E	h	R	S	地脚螺钉 Mounting screw		输出轴 Output shaft				输入轴 Input shaft				D	双轴型 Double shaft model		直联型 Direct connetion model	
							n	d0	d1	b1	c1	l1	d2	b2	c2	l2		L		L1	L2
0	160	140	39	12	3	M8	4	11	30	8	33	35	15	5	17	25	190	218	155	见电动机外形尺寸一览表 See overall dimensions for electric motor	20
1	200	170	65	16	4	M8	6	14	35	10	38	58	18	6	20.5	35	230	282	216		30
2	230	200	89	20	4	M10	6	14	45	14	48.5	82	22	6	24.5	40	260	352	276		50
3	310	270	89	22	4	M12	6	16	55	16	59	82	30	8	33	45	340	422	316		90
4	360	316	114	26	5	M16	8	18	70	20	74.5	105	35	10	38	54	400	490	383		130
5	450	400	140	30	6	M16	12	22	90	25	95	130	45	14	48.5	70	490	629	464		250
6	520	455	177	35	8	M20	12	22	100	28	106	165	50	14	58.8	80	580	736	556		395
7	590	520	180	40	10	M20	12	28	110	28	116	165	55	16	59	100	650	783	594		605
8	800	680	215	45	10	2-M20	12	34	130	32	137	200	70	20	74.5	120	880	966	733		1180

BY(Y)型卧式单级外形安装及联接尺寸 化工部标准 Standard of Ministry of Chemical Industry
 BY(Y) type (horizontal single stage) overall and mounting dimensions

机架尺寸 Frame size	安装尺寸 Mounting dimensions							轴伸连接尺寸 Shaft connecting dimensions								外形尺寸 Overall dimensions			重量 Weight kg		
	D1	D2	E	h	R	S	地脚螺钉 Mounting screw		输出轴 Output shaft				输入轴 Input shaft				D	双轴型 Double shaft model		直联型 Direct connetion model	
							n	d0	d1	b1	c1	l1	d2	b2	c2	l2		L		L1	L2
09	134	110	35	10	3	M8	4	11	22	6	24.5	30	15	5	17	25	160	102	141	见电动机外形尺寸一览表 See overall dimensions for electric motor	6
10	160	140	40	10	3	M8	4	11	30	8	33	35	15	5	17	25	160	218	155		13
11	200	170	60	12	4	M8	6	11	35	10	38	45	18	6	20.5	35	230	269	191		22
12	230	200	70	15	4	M10	6	11	45	14	48.5	61	22	6	24.5	40	260	321	255		40
13	310	270	80	20	5	M12	6	13	55	16	59	75	30	8	33	45	340	300	302		75
14	360	320	99	22	5	M12	8	15	70	20	74.5	92	35	10	38	54	400	463	358		120
15	450	400	115	30	5	M16	12	18	90	25	95	108	45	14	48.5	70	490	584	443		180
16	520	455	177	35	8	M20	12	22	100	28	106	165	50	14	53.5	80	580	736	527		380
17	590	520	180	40	10	M20	12	24	120	32	127	165	55	16	59	100	650	806	608		611
18	680	800	215	45	10	2-M20	12	34	140	36	148	200	70	20	74.5	120	880	1042	811		1170

注：1、表中列尺寸单位为毫米； 2、d1 d2轴轴伸配合公差为h6。
 Note: 1. The size unit in the table are millimeter; 2. Matching tolerance of shafts, h6.



XWE(D)型卧式双级外形安装及联接尺寸 天津标准 Tianjin standard
XWE(D) type. (horizontal Double stage) overall and mounting dimensions

Frame size 机架号	Centre height 中心高H0	安装尺寸 Mounting dimensions									轴伸连接尺寸 Shaft connecting dimensions								外形尺寸 Overall dimensions						重量kg Weight kg	
		A1	A0	B1	B0	h	s	地脚螺钉 Mounting screw		输出轴 Output shaft				输入轴 Input shaft				A	B	H	D	双轴型 Double shaft model		直联型 Direct connetion model		
								n	d0	d1	b1	c1	l1	d2	b2	c2	l2					L	L1	L2		
		见电动机外形尺寸一览表 See overall dimensions for electric motor																								
31	140	96	100	55	250	20	M8	4	16	35	10	38	55	15	5	17	25	150	290	240	200	310	258	37		
42	150	95	145	65	290	22	M10	4	16	45	14	48.5	74	15	5	17	25	195	330	275	240	384	326	75		
53	160	115	150	75	370	25	M12	4	18	55	16	59	91	18	6	20.5	35	260	420	356	300	457	383	94		
56	200	35	275	75	380	30	M12	4	22	65	18	69	89	18	6	20.5	35	335	430	425	340	519	447	148		
74	220	35	320	85	420	30	M12	4	22	80	22	85	109	22	6	24.5	40	380	470	460	360	589	508	193		
84	250	35	380	120	480	35	M16	4	22	90	25	95	120	22	6	24.5	40	440	530	529	430	633	552	270		
85	250	35	380	120	480	35	M16	4	22	90	25	95	120	30	8	33	45	440	530	529	430	656	566	310		
95	290	45	480	120	560	40	M20	4	26	100	28	106	141	30	8	33	45	560	620	614	500	745	655	485		
106	325	80	500	120	630	45	M24	6	30	110	28	116	150	35	10	38	54	600	690	706	580	855	750	650		
116	420	122	330X2	160	800	50	2-M20	6	32	130	32	137	202	35	10	38	54	810	880	883	710	1066	958	1232		
117	420	122	330X2	160	800	50	2-M20	6	32	130	32	137	202	40	12	43	65	810	880	883	710	1081	963	1280		

BWE(Y)型卧式双级外形安装及联接尺寸 上海标准 Shanghai standard
BWE(Y) type. (horizontal Double stage) overall and mounting dimensions

Frame size 机架号	Centre height 中心高H0	安装尺寸 Mounting dimensions									轴伸连接尺寸 Shaft connecting dimensions								外形尺寸 Overall dimensions						重量kg Weight kg	
		A1	A0	B1	B0	h	s	地脚螺钉 Mounting screw		输出轴 Output shaft				输入轴 Input shaft				A	B	H	D	双轴型 Double shaft model		直联型 Direct connetion model		
								n	d0	d1	b1	c1	l1	d2	b2	c2	l2					L	L1	L2		
		见电动机外形尺寸一览表 See overall dimensions for electric motor																								
120	160	78	200	75	340	25	M12	4	17	55	16	59	89	15	5	17	25	250	390	356	300	423	367	82		
131	160	78	200	75	340	25	M12	4	22	55	16	59	89	18	6	20.5	35	250	390	356	300	457	383	100		
141	200	53	320	80	340	25	M12	4	22	70	20	74.5	102	18	6	20.5	35	330	400	425	340	519	447	153		
152	240	39	380	80	420	32	M16	4	22	90	25	95	120	22	6	24.5	40	440	470	529	430	633	552	245		
153	240	39	330	80	420	32	M16	4	22	90	25	95	120	30	8	33	45	440	470	529	430	656	566	265		
163	290	45	480	90	560	35	M20	4	28	100	28	106	140	30	8	33	45	560	620	614	500	745	655	460		
174	325	80	500	120	630	40	M20	4	30	120	32	127	165	35	10	38	54	600	690	706	580	855	750	710		
184	420	122	330X2	160	800	50	2-M20	6	32	140	36	148	210	35	10	38	54	810	880	883	410	1071	959	1270		

注：1、表中列尺寸单位为毫米；
 Note: 1. The size unit in the table are millimeter;
 2、d1 d2轴轴伸配合公差为h6。
 2. Matching tolerance of shafts, h6.

BWE(Y)型卧式双级外形安装及联接尺寸 化工部标准 Standard of Ministry of Chemical Industry
BWE(Y) type. (horizontal Double stage) overall and mounting dimensions

XB

机座号 Frame size	中心距 Centre height	安装尺寸 Mounting dimensions							轴伸连接尺寸 Shaft connecting dimensions								外形尺寸 Overall dimensions						重量 Weight Kg			
		A1	A0	B1	B0	h	s	地脚螺钉 Mounting screw		输出轴 Output shaft				输入轴 Input shaft				A	B	H	D	双轴型 Double shaft model		直联型 Direct connection model		
								n	d0	d1	b1	c1	l1	d2	b2	c2	l2					L		L1	L2	
31	160	113	150	75	370	25	M12	4	18	55	16	59	82	18	6	20.5	35	288	410	360	300	473	407	见电动机外形尺寸一览表 See overall dimensions for electric motor	88	
41	200	35	275	80	380	30	M12	4	22	70	20	74.5	105	18	6	20.5	35	335	430	435	340	540	474		142	
42	200	35	275	80	380	30	M12	4	22	70	20	74.5	105	22	6	24.5	40	335	430	435	340	586	520		145	
52	250	35	380	85	480	35	M16	4	28	90	25	95	130	22	6	24.5	40	440	530	542	430	658	582		263	
53	250	35	380	85	480	35	M16	4	28	90	25	95	130	30	8	33	45	440	530	542	430	708	601		268	
63	290	45	480	90	560	40	M20	4	28	100	28	106	165	30	8	33	45	560	620	619	500	796	691		453	
74	325	80	500	105	630	45	M20	4	28	110	28	116	165	35	10	38	54	600	690	706	580	856	749		691	
84	420	122	330X2	140	800	50	2-M20	6	36	130	32	137	200	35	10	38	54	810	880	880	710	998	891		1260	

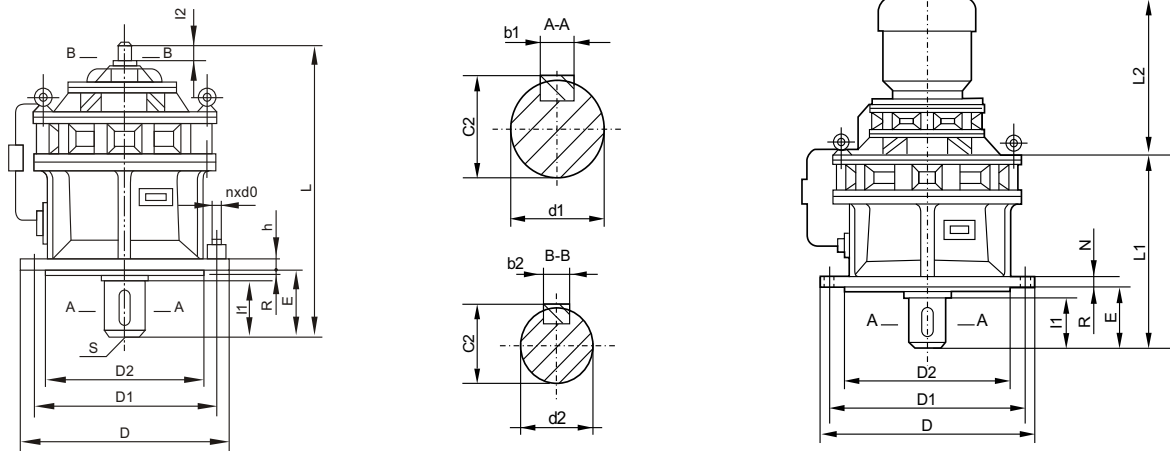
BWE(Y)型卧式双级外形安装及联接尺寸 机械部标准 Standard of Ministry of Machine-Building Industry
BWE(Y) type. (horizontal Double stage) overall and mounting dimensions

机座号 Frame size	中心距 Centre height	安装尺寸 Mounting dimensions							轴伸连接尺寸 Shaft connecting dimensions								外形尺寸 Overall dimensions						重量 Weight Kg			
		A1	A0	B1	B0	h	s	地脚螺钉 Mounting screw		输出轴 Output shaft				输入轴 Input shaft				A	B	H	D	双轴型 Double shaft model		直联型 Direct connection model		
								n	d0	d1	b1	c1	l1	d2	b2	c2	l2					L		L1	L2	
1812	150	95	145	60	290	22	M10	4	17	45	14	48.5	82	15	5	17	25	195	330	318	240	384	326	见电动机外形尺寸一览表 See overall dimensions for electric motor	75	
2215	160	113	150	75	370	25	M12	4	17	55	16	59	82	18	6	20.5	35	238	410	360	300	473	407		100	
2715	200	35	275	80	380	30	M12	4	22	70	20	74.5	105	18	6	20.5	35	335	430	435	340	540	474		150	
3322	250	35	380	85	480	35	M16	4	26	90	25	95	130	30	8	33	45	440	530	542	430	706	691		364	
3922	290	45	480	90	560	40	M20	4	26	100	28	106	165	30	8	33	45	560	620	619	500	796	691		472	
4527	325	80	500	105	630	45	M20	4	34	110	28	116	165	35	10	38	54	600	690	706	580	856	749		726	
5527	420	122	300X2	140	800	50	2-M20	6	36	130	32	137	200	35	10	38	54	810	880	880	710	1076	975		1286	

JXJWE型卧式双级外形安装及联接尺寸 江门标准 Jiangmen standard
JXJWE type. (horizontal Double stage) overall and mounting dimensions

机座号 Frame size	中心距 Centre height	安装尺寸 Mounting dimensions							轴伸连接尺寸 Shaft connecting dimensions								外形尺寸 Overall dimensions						重量 Weight Kg			
		A1	A0	B1	B0	h	s	地脚螺钉 Mounting screw		输出轴 Output shaft				输入轴 Input shaft				A	B	H	D	双轴型 Double shaft model		直联型 Direct connection model		
								n	d0	d1	b1	c1	l1	d2	b2	c2	l2					L		L1	L2	
20	140	60	180	60	285	20	M10	4	16	50	14	53.5	70	15	5	17	25	230	335	310	240	382	323	见电动机外形尺寸一览表 See overall dimensions for electric motor	60	
31	160	60	220	75	350	25	M12	4	18	65	18	69	110	18	6	20.5	35	280	410	355	300	518	447		105	
41	190	72	270	80	400	25	M12	4	25	80	22	85	130	18	6	20.5	35	350	460	430	340	565	498		150	
52	250	85	380	80	480	35	M16	4	25	90	25	95	130	22	6	24.5	40	440	530	540	430	658	581		237	
53	250	85	380	80	480	35	M16	4	25	90	25	95	130	30	6	33	45	440	530	540	430	703	600		270	
63	290	90	480	90	560	40	M20	4	28	100	28	106	165	30	6	33	45	560	620	614	500	790	667		460	

注：1、表中所列尺寸单位为毫米； 2、d1 d2轴轴伸配合公差为h6。
 Note: 1. These units in the table are millimeter; 2. Matching tolerance of shafts, h 6.



XLE(D)型立式双级外形安装及联接尺寸 天津标准 Tianjing standard
XLE(D) type. (vertically. double stage) overall and mounting dimensions

机架尺寸 Frame size	安装尺寸 Mounting dimensions							轴伸连接尺寸 Shaft connecting dimensions								外形尺寸 Overall dimensions			重量 Weight Kg		
	D1	D2	E	h	R	S	地脚螺钉 Mounting screw		输出轴 Output shaft				输入轴 Input shaft				D	双轴型 Double shaft model		直联型 Direct connetion model	
							n	d0	d1	b1	c1	l1	d2	b2	c2	l2		L		L1	L2
31	200	170	50	15	4	M8	6	12	35	10	38	45	15	5	17	25	230	310	258	见电动机外形尺寸一览表 See overall dimensions for electric motor	35
42	230	200	79	15	4	M10	6	12	45	14	48.5	64	15	5	17	25	260	384	326		75
53	310	270	92	20	4	M12	6	12	55	16	59	79	18	6	20.5	35	340	457	383		95
63	360	316	92	22	5	M12	8	16	65	18	69	80	18	6	20.5	35	400	519	447		149
74	390	345	114	22	5	M12	8	18	80	22	85	98	22	6	24.5	40	430	589	508		193
84	450	400	112	30	6	M16	12	18	90	25	95	110	22	6	24.5	40	490	633	552		280
85	450	400	112	30	6	M16	12	18	90	25	95	110	30	8	33	45	490	656	566		310
95	520	455	170	35	8	M20	12	22	100	28	106	130	30	8	33	45	580	745	655		495
106	590	520	175	40	10	M20	12	22	110	28	116	140	35	10	38	54	650	855	754		667
117	800	580	210	45	10	2-M20	12	38	130	32	137	184	40	12	43	65	880	1081	963		1290

JXJLE型卧式双级外形安装及联接尺寸 江门标准 Jiangmen standard
JXJLE type. (vertically. double stage) overall and mounting dimensions

机架尺寸 Frame size	安装尺寸 Mounting dimensions							轴伸连接尺寸 Shaft connecting dimensions								外形尺寸 Overall dimensions			重量 Weight Kg		
	D1	D2	E	h	R	S	地脚螺钉 Mounting screw		输出轴 Output shaft				输入轴 Input shaft				D	双轴型 Double shaft model		直联型 Direct connetion model	
							n	d0	d1	b1	c1	l1	d2	b2	c2	l2		L		L1	L2
20	230	200	66	18	4	M10	6	14	50	14	53.5	68	15	5	17	25	260	382	323	见电动机外形尺寸一览表 See overall dimensions for electric motor	62
31	310	270	89	25	4	M12	6	14	65	18	69	82	18	6	20.5	35	340	515	448		105
41	360	316	125	25	5	M12	8	20	80	22	85	115	18	6	20.5	35	400	565	498		155
42	360	316	125	25	5	M12	8	20	80	22	85	115	22	6	24.5	40	400	581	504		165
52	450	400	140	30	6	M16	12	20	90	25	95	130	22	6	24.5	40	495	653	581		265
53	450	400	140	30	6	M16	12	20	90	25	95	130	30	8	33	45	495	703	600		285
63	520	455	177	35	8	M20	12	20	100	28	106	165	30	8	33	45	580	796	673		470

注：1、表中列尺寸单位为毫米；
 Note: 1. The size unit in the table are millimeter;
 2、d1 d2轴轴伸配合公差为h6。
 2. Matching tolerance of shafts, h6.

BLE(Y)型立式双级外形安装及联接尺寸 上海标准 Shanghai standard
BLE(Y) type. (vertically. double stage) overall and mounting dimensions

XB

机型号 Frame size	安装尺寸 Mounting dimensions							轴伸连接尺寸 Shaft connecting dimensions								外形尺寸 Overall dimensions				重量 Weight kg		
	D1	D2	E	h	R	S	地脚螺钉 Mounting screw		输出轴 Output shaft				输入轴 Input shaft				D	双轴型 Double shaft model			直联型 Direct connetion model	
							n	d0	d1	b1	c1	l1	d2	b2	c2	l2		L	L1		L2	
120	230	200	80	15	4	M10	6	11	45	14	48.5	64	15	5	17	25	260		368	312	见电动机外形尺寸一览表 See overall dimensions for electric motor	75
130	310	270	94	20	5	M12	6	13	55	16	59	79	15	5	17	25	340		423	372		87
131	310	270	94	20	5	M12	6	13	55	16	59	79	20	6	22.5	35	340		453	392		95
141	360	320	106	22	5	M12	8	15	70	20	74.5	92	20	6	22.5	35	400		521	460		145
152	450	400	115	30	5	M16	12	18	90	25	95	110	22	6	24.5	40	490		616	542		215
153	450	400	115	30	5	M16	12	18	90	25	95	110	30	8	33	45	490		656	566		230
163	520	455	177	35	8	M20	12	24	100	28	106	165	30	8	33	45	580		781	685		440
174	590	520	180	40	10	M20	12	24	120	32	127	165	35	10	38	54	650		865	760		700
184	680	800	215	45	10	2-M20	12	34	140	36	148	200	35	10	38	54	880		1081	966		1280

BLE(Y)型立式双级外形安装及联接尺寸 机械部标准 Standard of Ministry of Machine-Building Industry
BLE(Y) type. (vertically. double stage) overall and mounting dimensions

机型号 Frame size	安装尺寸 Mounting dimensions							轴伸连接尺寸 Shaft connecting dimensions								外形尺寸 Overall dimensions				重量 Weight kg		
	D1	D2	E	h	R	S	地脚螺钉 Mounting screw		输出轴 Output shaft				输入轴 Input shaft				D	双轴型 Double shaft model			直联型 Direct connetion model	
							n	d0	d1	b1	c1	l1	d2	b2	c2	l2		L	L1		L2	B
1812	230	200	89	20	4	M10	6	14	45	14	48.5	82	15	5	17	25	260		384	326	见电动机外形尺寸一览表 See overall dimensions for electric motor	72
2215	310	270	89	22	4	M12	6	14	55	16	59	82	18	6	20.5	35	340		473	407		94
2715	360	316	114	26	5	M12	8	18	70	20	74.5	105	18	6	20.5	35	400		540	747		150
3318	450	400	140	30	6	M16	12	22	90	25	95	130	22	6	24.5	40	490		633	552		280
3322	450	400	140	30	6	M16	12	22	90	25	95	130	30	8	33	45	490		706	601		364
3922	520	455	177	35	8	M20	12	22	100	28	106	165	30	8	33	45	580		796	691		472
4527	590	520	180	40	10	M20	12	28	110	28	116	165	35	10	38	54	650		886	749		696
5527	800	680	215	45	10	2-M20	12	34	130	32	137	200	35	10	38	54	880		998	891		1220

BLE(Y)型立式双级外形安装及联接尺寸 化工部标准 Standard of Ministry of Chemical Industry
BLE(Y) type. (vertically. double stage) overall and mounting dimensions

机型号 Frame size	安装尺寸 Mounting dimensions							轴伸连接尺寸 Shaft connecting dimensions								外形尺寸 Overall dimensions				重量 Weight kg			
	D1	D2	E	h	R	S	地脚螺钉 Mounting screw		输出轴 Output shaft				输入轴 Input shaft				D	双轴型 Double shaft model			直联型 Direct connetion model		
							n	d0	d1	b1	c1	l1	d2	b2	c2	l2		L	L1		L2	B	
20	230	200	89	20	4	M10	6	14	45	14	48.5	82	15	5	17	25	260		384	326	326	见电动机外形尺寸一览表 See overall dimensions for electric motor	75
31	310	270	89	22	4	M12	6	16	55	16	59	82	18	6	20.5	35	340		473	407	407		94
41	360	316	114	26	5	M12	8	18	70	20	74.5	105	18	6	20.5	35	400		525	458	458		114
52	450	400	140	30	6	M16	12	22	90	25	95	130	22	6	24.5	40	490		633	552	552		263
53	450	400	140	30	6	M16	12	22	90	25	95	130	30	8	33	45	490		706	601	601		274
63	520	455	177	35	8	M20	12	24	100	28	106	165	30	8	33	45	580		769	691	691		450
74	590	520	180	40	10	M20	12	28	110	28	116	165	35	10	38	54	650		856	749	749		777
84	800	680	215	45	10	2-M20	12	34	130	32	137	200	35	10	38	54	880		998	891	891		1240

注: 1、表中列尺寸单位为毫米; 2、d1 d2轴轴伸配合公差为h6。
Note: 1. The size unit in the table are millimeter; 2. Matching tolerance of shafts, h6.