

Thrust Ball Bearings



Single direction thrust ball bearings can accommodate axial loads in one direction and therefore locate a shaft axially in one direction.

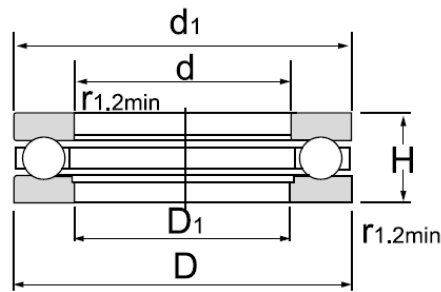
They must not be subjected to any radial load. Double direction thrust ball bearings can accommodate axial loads acting in both directions and can thus serve to axially locate a shaft in both directions.

The main application of these type of bearings are in steering mechanism of automobiles and spindles of machines.

Cages: pressed cages of steel sheets or brass cages.

Applications: Steering mechanism of automobiles and machine tool spindles.

Thrust Ball Bearing



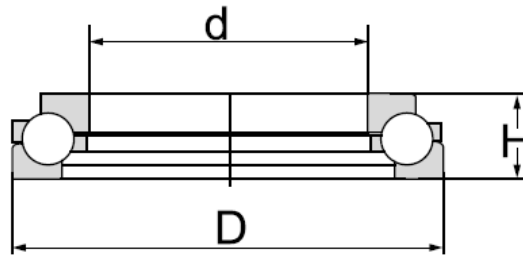
Thrust Ball Bearing											
Bearing Number	Boundary dimensions (mm)						Basic load ratings		Limiting speeds (rpm)		Mass (kg)
	d	D	H	d1	D1	r1.2 min	Dynamic	Static	Oil	Grease	
							C_a	C_{oa}	Lub.	Lub.	
51220	100	150	38	150	103	1.1	146 000	325 000	1 800	1 300	2.12
51320M	100	170	55	170	103	1.5	238 000	475 000	1 400	950	4.92
51420	100	210	85	205	103	3	371 000	765 000	950	700	135
51222	110	160	38	160	113	1.1	153 000	360 000	2 200	1 200	1.12
51322	110	190	63	187	113	2	265 000	560 000	1 200	630	7.08
51124	120	155	25	155	122	1	88 400	245 000	2 200	1 600	1.13
51324	120	210	70	205	123	2.1	312 000	695 000	1 100	800	9.43
51126	130	170	30	170	132	1	111 000	310 000	1 900	1 400	1.67
51326	130	225	75	220	134	2.1	332 000	765 000	1 000	750	4.17
51228	140	200	49	197	143	1.5	208 000	520 000	1 400	950	4.33
51230M	150	215	50	212	153	1.5	229 000	570 000	1 300	900	5.8
51330	150	250	80	245	154	2.1	377 000	950 000	900	670	17
51132	160	200	31	198	162	1	112 000	340 000	1 700	1 200	2.38
51134	170	215	34	213	172	1.1	133 000	400 000	1 600	1 100	2.64
51136	180	225	34	225	183	1.1	135 000	425 000	1 500	1 000	2.86
51236	180	250	56	247	183	1.5	265 000	695 000	1 100	800	8.02
51336M	180	300	95	295	184	3	462 000	1 270 000	750	560	26.7
51140	200	250	37	247	203	1.1	168 000	520 000	1 400	950	3.6
51240	200	280	62	277	204	2	312 000	880 000	1 000	750	11
51340	200	340	110	335	205	4	6 60 000	1 865 000	630	480	30.8
51144M	220	270	37	367	223	1.1	178 000	585 000	1 300	900	4.45
51244	220	300	63	397	224	2	325 000	956 000	950	700	12.9
51125	260	320	45	317	263	1.5	238 000	815 000	1 100	800	7.56
51156	280	350	53	347	283	1.5	319 000	1 100 000	950	700	11.4
51256	280	380	80	375	284	2.1	449 000	1 560 000	750	560	25.3
51260	300	420	95	415	304	3	585 000	2 200 000	630	480	40
51164	320	400	63	396	324	2	371 000	1 430 000	800	600	18

Thrust Ball Bearing

Thrust Ball Bearing

Bearing Number	Boundary dimensions (mm)						Basic load ratings		Limiting speeds (rpm)		Mass (kg)
	d	D	H	d1	D1	r1.2 min	Dynamic	Static	Oil	Grease	
							C_a	C_{oa}	Lub.	Lub.	
51168	340	420	64	416	344	2	3 23 000	1 768 000	800	600	19.9
51368	340	540	160	535	345	5	8 63 000	4 439 000	530	400	18
51172	360	440	65	436	364	2	3 31 000	1 890 000	750	560	19.9
51272	360	500	110	495	365	4	6 10 000	3 591 000	530	400	137
51292	460	620	130	615	465	5	7 20 000	4 560 000	560	430	64.7
-	670	1000	200	1000	670.7	9.5	1 970 000	12 900 000	-	-	479

Angular contact thrust ball bearing



Angular contact thrust ball bearing

Bearing Number	Boundary dimensions (mm)			Basic load ratings		Mass (kg)
	d	D	H	Dynamic	Static	
				C_a	C_{oa}	
91681/500	500	600	60	3 22 000	1 956 000	30.3
71687/520	520	600	45	5 22 000	2 30 000	19.4
71682/560	560	750	85	6 10 000	7 10 000	94
31688/630	630	780	112	6 32 000	8 60 000	112
1681/670X	670	800	105	7 90 000	3 530 000	101
91682/670	670	900	140	1 235 000	5 838 000	220
78682/710	710	950	109	1 130 000	8 230 000	184
91682/750X	750	1000	150	1 350 000	6 738 000	309
1688/770X	770	900	90	7 88 000	7 10 000	95.2
1687/770X	770	1000	150	7 98 000	1 290 0000	292
71682/800	800	1060	118	8 68 000	1 100 000	254
11689/1060	1060	1150	70	1 064 000	5 50 000	74.5
91681/1250	1250	1480	140	1 290 000	1 470 000	396
11689/1400X	1400	1520	95	1 420 000	89 000	156